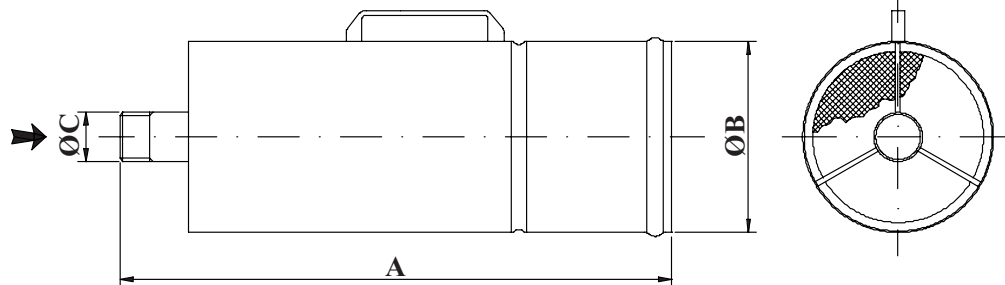




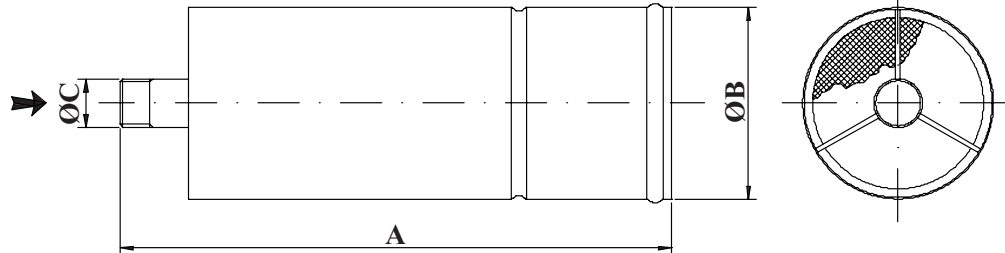
Certified



### PORTABLE VERSION



### FIXED VERSION



### CONSTRUCTION FEATURES

- Body and nozzle material: stainless steel

### OPTIONAL

- Connections types: UNI-45, UNI-70, STORZ, BSS, NH or UNI / DIN, ANSI / ASA flanges, others

MODEL	A	ØB	ØC	NOMINAL FLOW RATE	WORKING PRESSURE	FOAM PRODUCTION	THROW	WEIGHT
	mm	mm	BSP	l/min.-5 bar	bar	<sup>(1) (2)</sup> m <sup>3</sup> /min.- 5 bar	m- 5 bar	Kg
SME-1	500	160	1½”M	100	3 ÷ 8	9	~ 8	3.5
SME-2	696	235	1½”M	225	3 ÷ 8	18	~ 11	6
SME-4	846	300	2”M	450	3 ÷ 8	40.5	~ 12	9
SME-8	1100	400	2½”M	800	3 ÷ 8	55	~ 9	13
SME-20	1100	400	2½”M	2000	3 ÷ 8	120	~ 10	13

<sup>(1)</sup> The expansion ratio understands with fresh air, or different indication of foam producer.

<sup>(2)</sup> Depending on foam concentrate type.