



## C&C Self-Contained Breathing Apparatus (SCBA) Holders

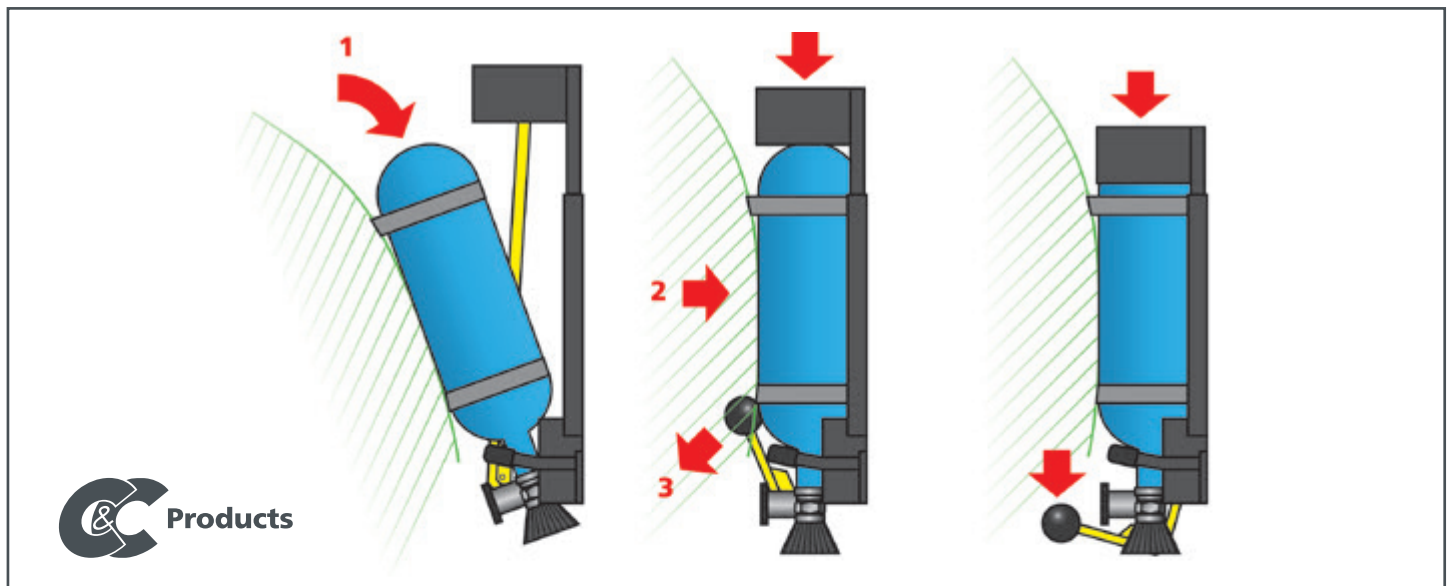
The C&C SCBA holders are very user-friendly clamping holders, which have been especially developed for the attachment of self-contained breathing equipment in fire engines and special vehicles. They are the only SCBA holders available for delivery in the Netherlands which have been tested in accordance with the European standard EN 1846-2. With its C&C SCBA holders C&C Products has been leader in the Dutch market for fire brigade equipment for many years.

C&C SCBA holders can be installed both against the wall of a vehicle and in the backrest of a seat. With the exception of all moving parts, these holders are finished with a black powder coating. Moving parts have been finished with an eye-catching yellow powder coating.

### The C&C SCBA holder is furthermore characterized by:

- Insensitivity to malfunctions due to the simple design and strong construction;
- Easy adjustment of the holders to fit the circumstances of deployment (for instance left/right);
- The presence of the necessary fixtures for attaching head and lumbar support and for an adjustment of the height;
- Plastic guard components, for preventing damages to the air cylinder;
- The availability of individual replacement parts.

### Operating principle



### In conformity with EN 1846-2

The C&C SCBA holders have been tested in conformity with the European standard EN 1846-2 and are warranted for a set weight of 25 kg and up to a force of 20 G. The C&C scuba diving holders have been tested in conformity with the European standard EN 1846-2 and are warranted for a set weight of 25 kg and up to a force of 10 G.



### Operation

C&C SCBA holders come with a lever for right-hand operation:

### Optional operating possibilities at no extra charge:

- Left-hand or right-hand standard operation 45° (lumbar support not possible)
- Left-hand or right-hand operation 90°, for holders fitted with lumbar supports.



## Models

### BA-143

Respiratory equipment holder with a small head, for cylinders with:

- A diameter of up to 143 mm
- A length of 425 mm up to 570 mm

EN 1846-2 up to 20 G

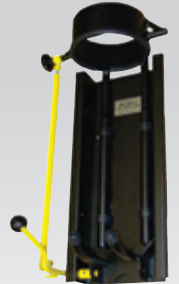


### BA-165

Respiratory equipment holder with a large head, for cylinders with:

- A diameter of up to 165 mm
- A length of 425 mm up to 570 mm

EN 1846-2 up to 20 G

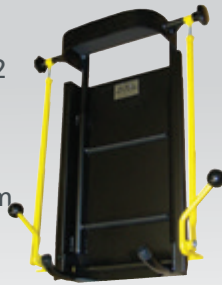


### BA2-130

Respiratory equipment holder for 2 cylinders with:

- A diameter of up to 130 mm
- A length of 450 mm up to 600 mm

EN 1846-2 up to 20 G

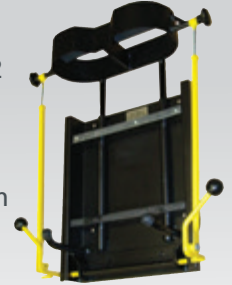


### BA2-145

Respiratory equipment holder for 2 cylinders with:

- A diameter of up to 145 mm
- A length of 430 mm up to 530 mm

EN 1846-2 up to 20 G



### BA2-165

Respiratory equipment holder for 2 cylinders with:

- A diameter of up to 165 mm
- A length of 430 mm up to 530 mm

EN 1846-2 up to 20 G



### BD-150

Respiratory equipment holder with a small foot, for 2 cylinders with:

- Closure towards the top
- A diameter of up to 150 mm
- A length of 540 mm to 630 mm

EN 1846-2 up to 10 G



### BD-190

Respiratory equipment holder with a small foot, for cylinders with:

- Closure towards the top
- A diameter of up to 190 mm
- A length of 540 mm to 650 mm

EN 1846-2 up to 10 G



### AB-165

A workplace holder for the most frequently used types of respiratory air bottles.



## Accessories for C&C SCBA holders

Lumbar and head support are available for the purpose of increasing the comfort of a seat which has a backrest consisting of respiratory equipment for the C&C SCBA holders. While this combination of head and lumbar supports increases the sitting comfort of the seat considerably, it is primarily designed to provide more safety to the personnel on the seat. When no respiratory equipment is placed in the holder, the seat is still comfortable and safe.

The height-adjustable carriage ensures that C&C SCBA holders are always in the right position for persons of different heights. This improves both the sitting comfort and safety.

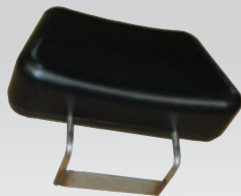
When the electric lock is activated, a pin slides out and the respiratory equipment holder can no longer be unlocked. This makes it possible for the driver or the commander to determine if the respiratory equipment may be removed. The holders are always unlocked when there is no voltage on the system.

## Accessories

### HS-1

Head support with a bent insert for the C&C SCBA holders.

(Can be delivered separately or mounted on the SCBA holder)



### BS-1

Lumbar supports for the C&C SCBA holders.

(Can be delivered separately or mounted on the SCBA holder)



### BS-2

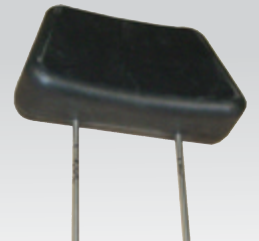
Insert, for when no air bottle has been positioned.

(Only in combination with the BS-1 lumbar supports)



### HS-2 & HS-3

Removable head supports with a straight (HS-2) or a wooden (HS-3) insert, which can be mounted separately in or against the wall.



### S-1

Height-adjustable carriage



### L-1

Electric lock in a 12 V or 24 V version.



### GB-1

Container for a facemask, to be installed behind the head rest.



### DB-1

Strap clamps for straps of the respiratory equipment.





## Loose parts for C&C SCBA holders

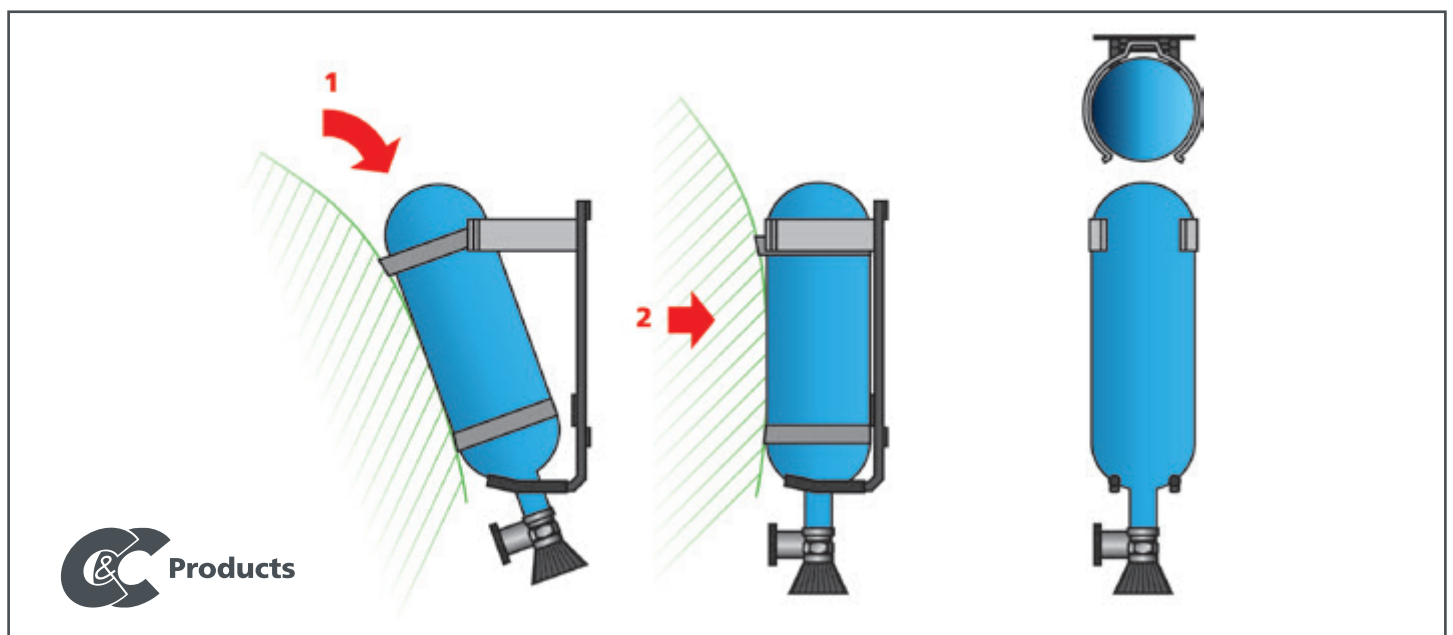
- |  |  |
|--|--|
| 1 Grip nut                                     | 8 Lever, complete (left-hand/right-hand and standard/right-angled) |
| 2 Head (small or large)                        | 9 M10 Phillips screw (for the ALB)                                 |
| 3 Self-adhesive rubber strip (inside the head) | 10 Edge piping, medium (delivered per metre)                       |
| 4 Standard back panel (ALB)                    | 11 Stacking buffer PE (only for ALB with large head)               |
| 5 Covering cap 16 (over PVC tube)              | 12 Plastic filler (only for ALB with small head)                   |
| 6 Pulling bar                                  | 13 PVC tube (Ø 16, length 100 mm)                                  |
| 7 Ball-type head with ring (Ø40 klemp. 12)     |  |

## C&C Workplace holder

This holder was especially developed for the attachment of respiratory equipment against the wall of a building or any other static location. The C&C workplace holder is suitable for the most frequently used types of single air bottles.

The C&C workplace holder is made of steel and has been finished with a black powder coating. This holder is also a deliverable in stainless steel at an additional charge. The two support rods are provided with a PE cover. The spring clamp is covered with plastic.

## Operating principle



The neck of the air bottle is positioned on the two supporting rods, after which the bottle can be tipped into the spring clamp. For deployment in vehicles, the bottle can be additionally secured by means of a tie down strap that is part of the delivery.

## Installation

The SCBA holder must be attached to a construction of sufficient strength. Four M8 bolts are required for attachment.

### Adjustment of the holder

To ensure safety and to prevent wear and tear, the holder must be adjusted to the length of the cylinder that needs to be clamped. Please make sure to check this adjustment regularly.

1. Loosen the grip nut (A)
2. Loosen the locknut (B)
3. While turning (C), adjust to the correct distance for the bottle
4. Retighten the locknut
5. Tighten the grip nut



## Protection

The holder has been provided with protective plastic guards for the purpose of preventing damage to the air cylinder. These parts are not available separately. Inspect the protective guards regularly.

## Protective parts

- 1 x self-adhesive rubber strip in the head (1)
- 4 x stacking buffers around the pipes, made of PE (2)
- 2 x rubber sheathing around the support rods (3)
- 2 x covering cap 16 (4)



## Warning

Operation of the equipment leads to a movement of parts relative to each other. An injury can occur if the operating lever is modified, or if the lever is not held by the button.

## Caution

To offer sufficient protection against impact, the holder must be adjusted properly on the corresponding air cylinder. Please make sure to check this regularly.

The respiratory equipment holder is no replacement for a safety belt; it must always be worn in combination with a safety belt while driving.

For safety purposes, it is recommended that the holder is only unlocked after the vehicle has come to a standstill.

